



## Dachshund

**Chest circumference:** over 35 cm / 13.8 in

**Weight:** 9 to 12 Kg / 18 to 24 lb **Origin:** Germany

**Personality:** Friendly, loyal to their masters, patient and calm

In medieval Europe, in the areas surrounding present-day Germany, there are records of a breed of dog called the Teckel that was bred for hunting purposes. The Teckel, with its long torso and short legs, is considered to be the ancestor of today's Dachshund. With "dachs" meaning badger and "hund" meaning dog, the name Dachshund comes from what the breeds were originally developed for, which was to chase badgers and foxes down into their burrows.

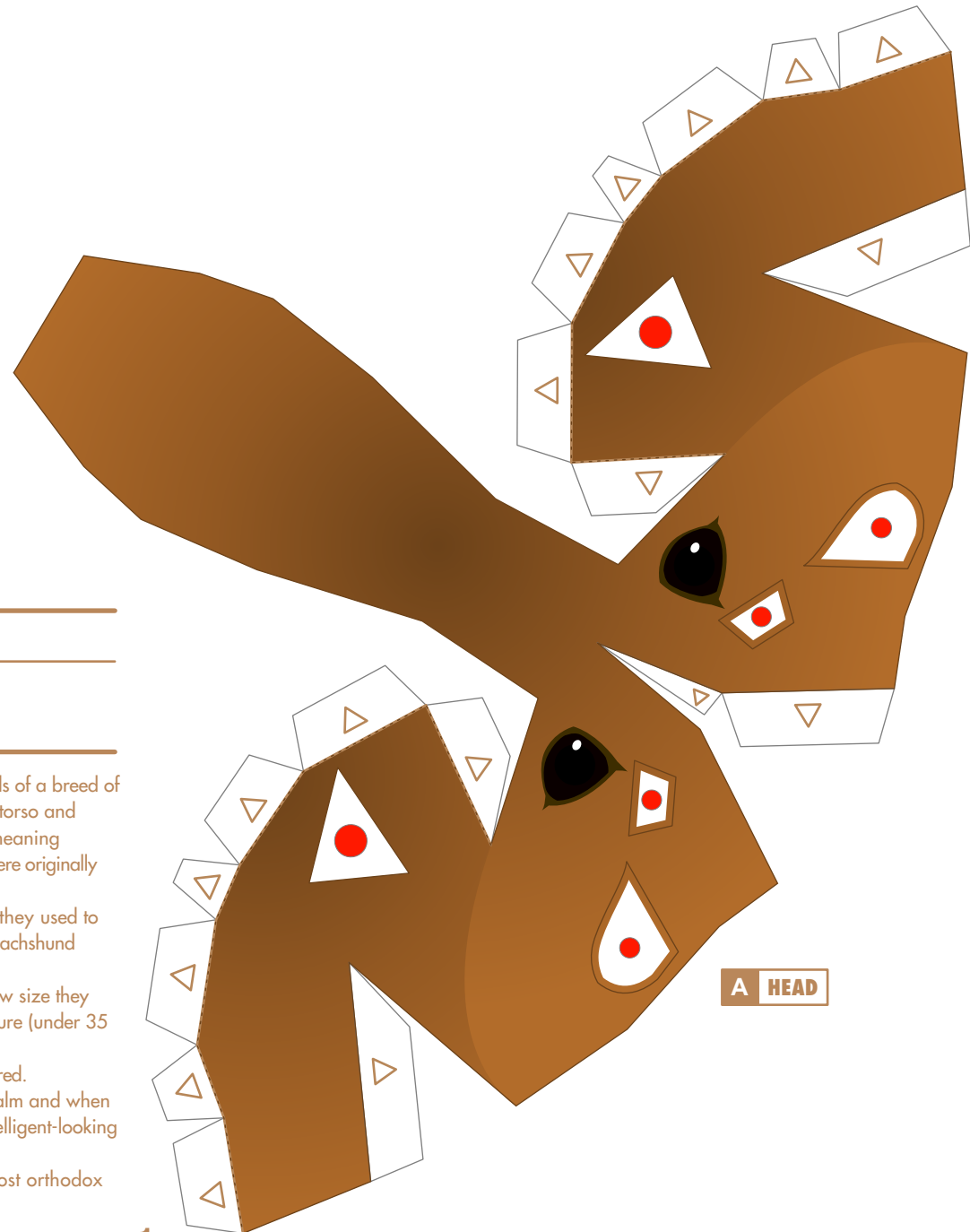
While today's Dachshunds are considered loveable domestic dogs everywhere, they used to be treated as hunting dogs in Germany, the country of origin. The classification of Dachshund breeds traces back to these hunting days.

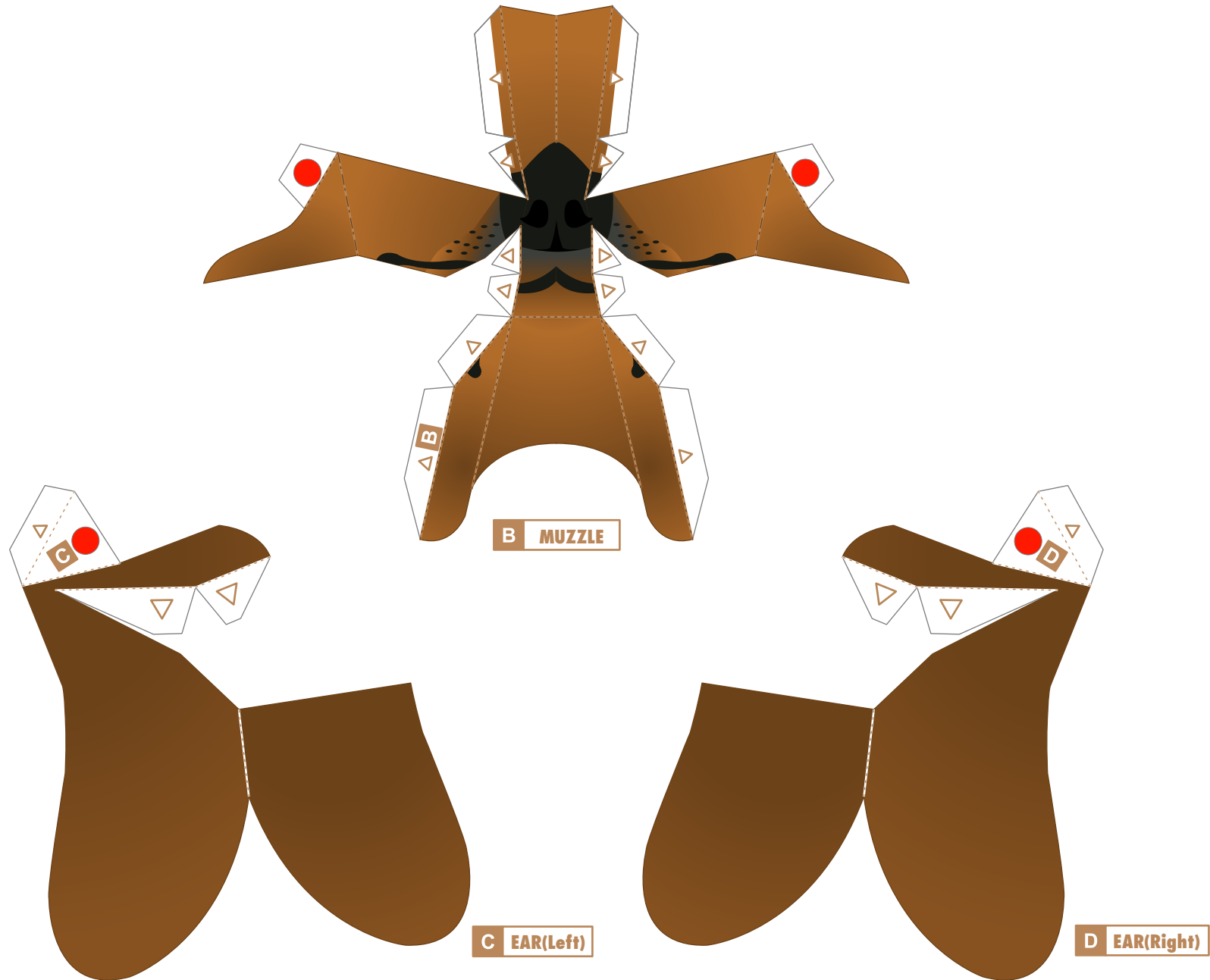
They are grouped according to the circumference of their chest to match the burrow size they can fit into, with the largest being the Standard (over 35 cm), followed by the Miniature (under 35 cm), and the smallest being the Kanichen (under 30 cm).

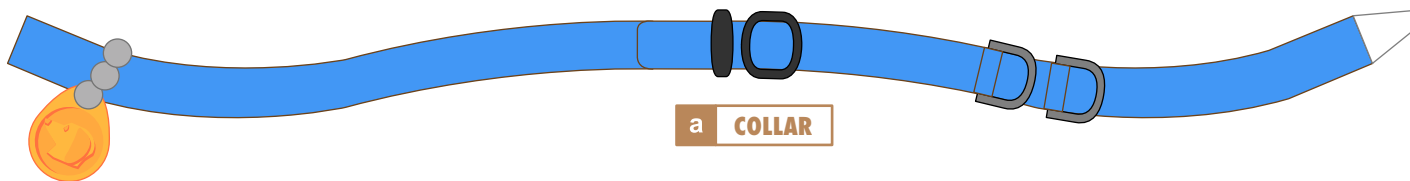
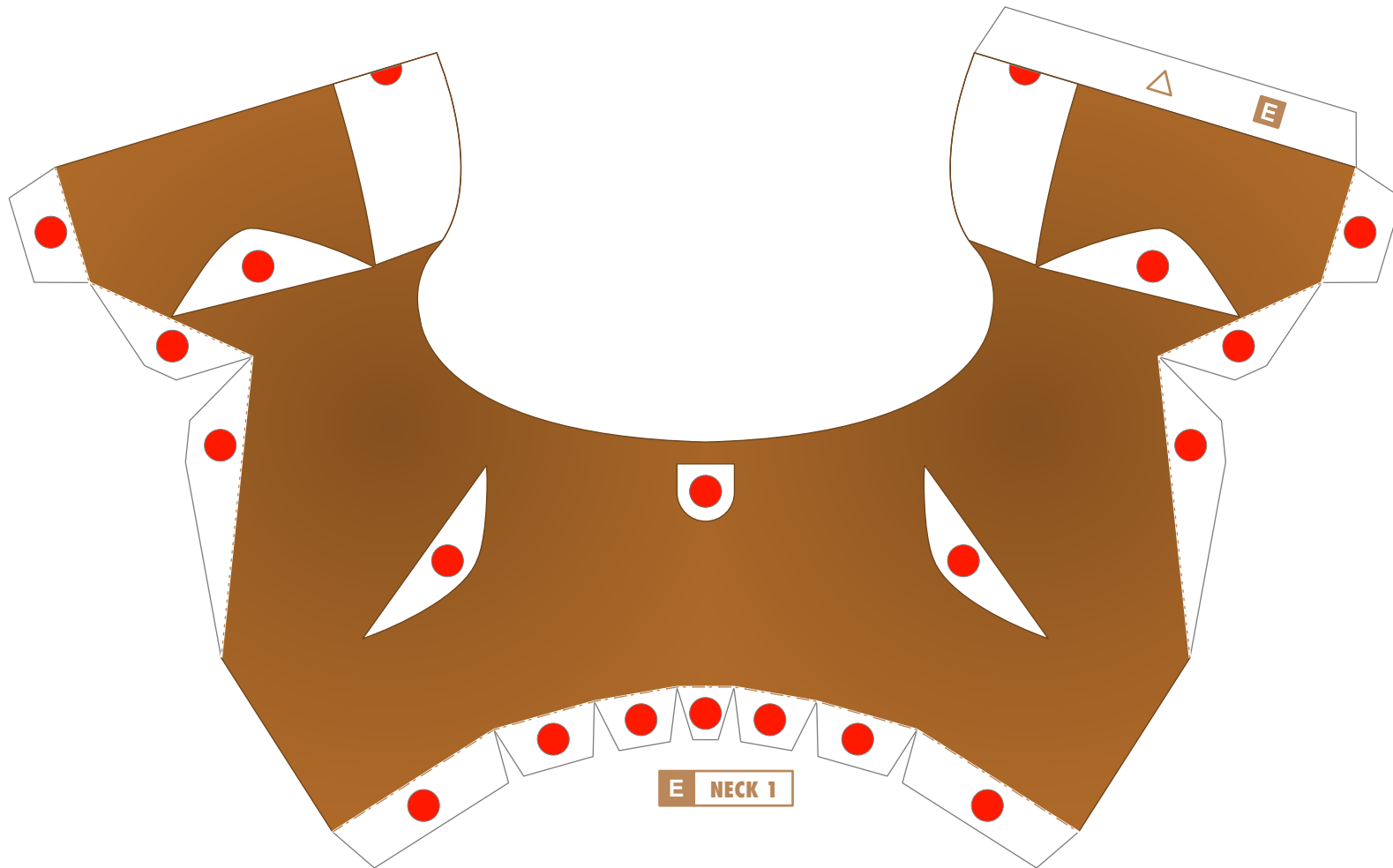
They are also classified into three coat types: Smooth-haired, Long-haired, and Wire-haired.

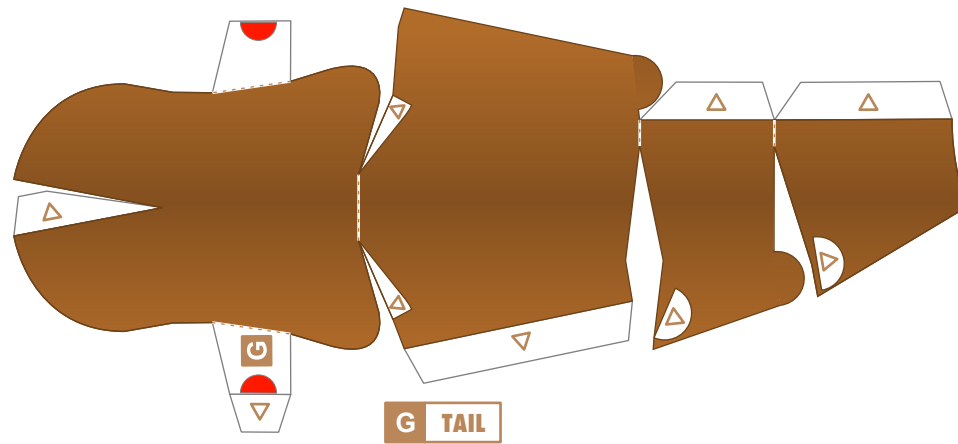
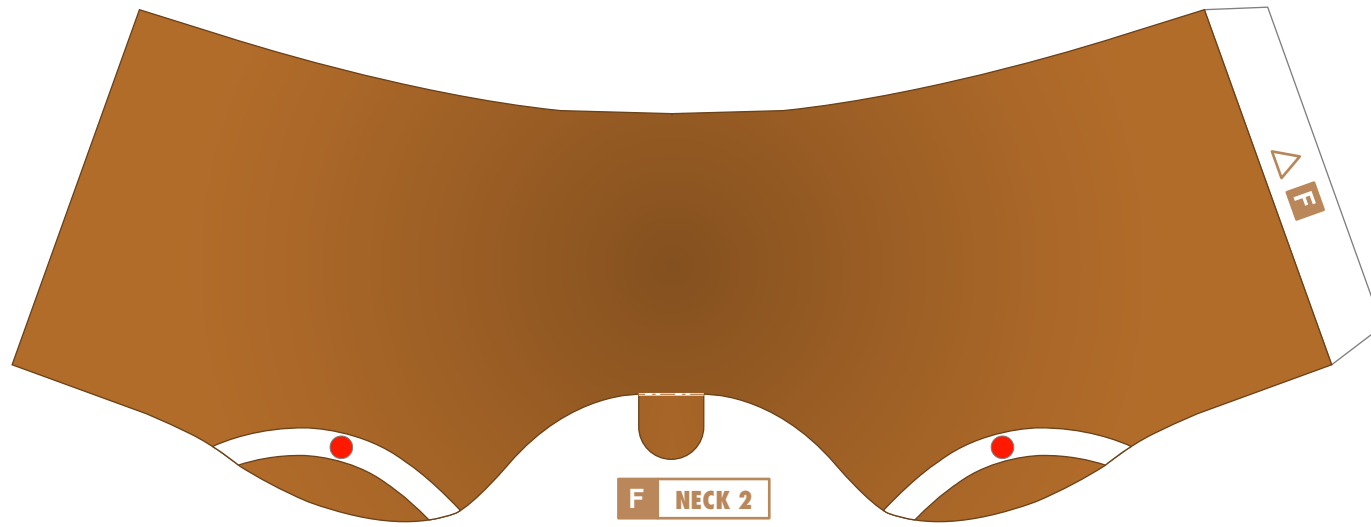
Dachshunds have friendly, lively qualities. They are loyal to their masters, patient, calm and when there is a visitor they will let their masters know by barking. Cleverness and an intelligent-looking facial expression also add to the appeal of the Dachshund.

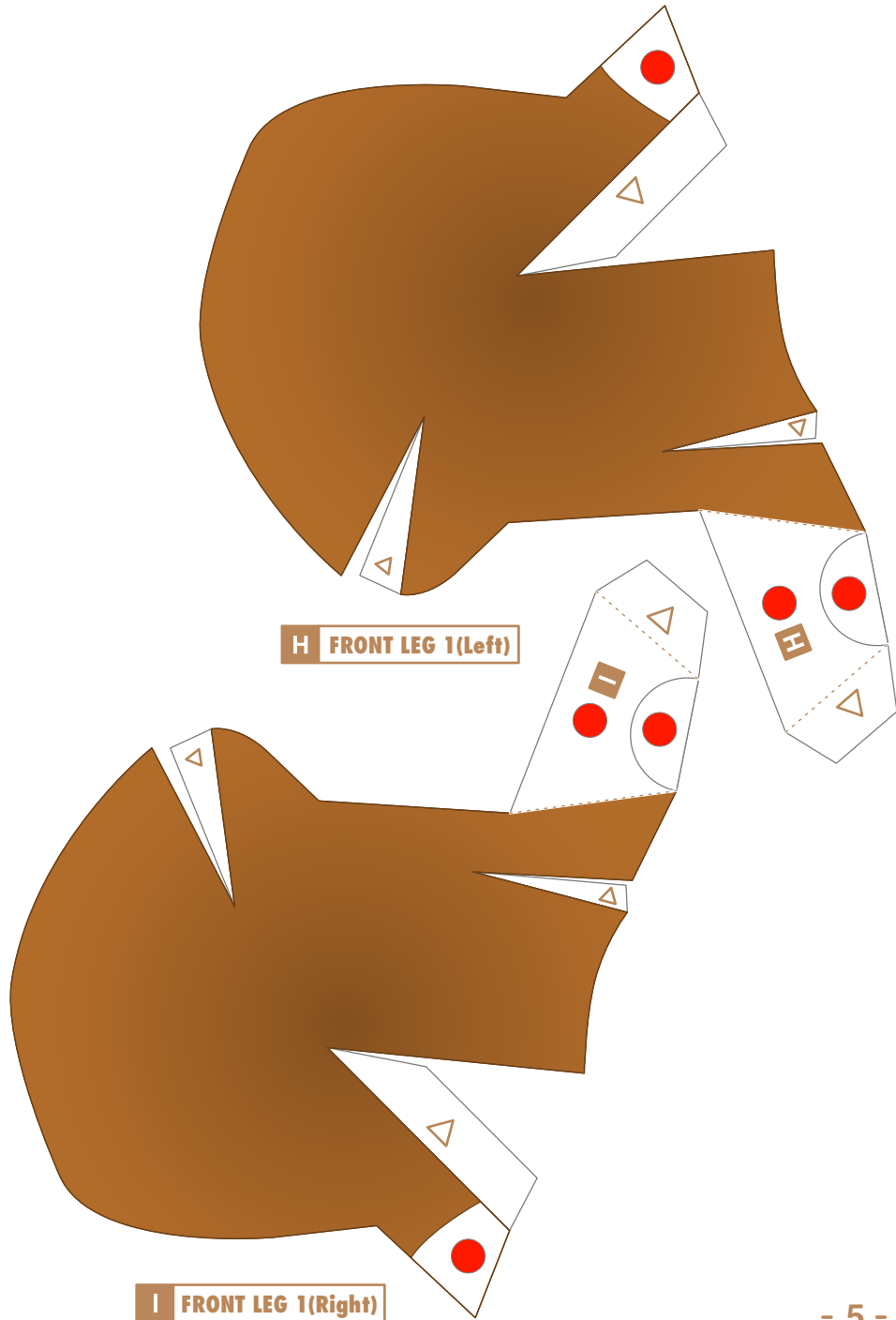
This Papercraft is a model of the standard-size smooth-haired Dachshund, the most orthodox type, and is approximately half the size of a real Dachshund.





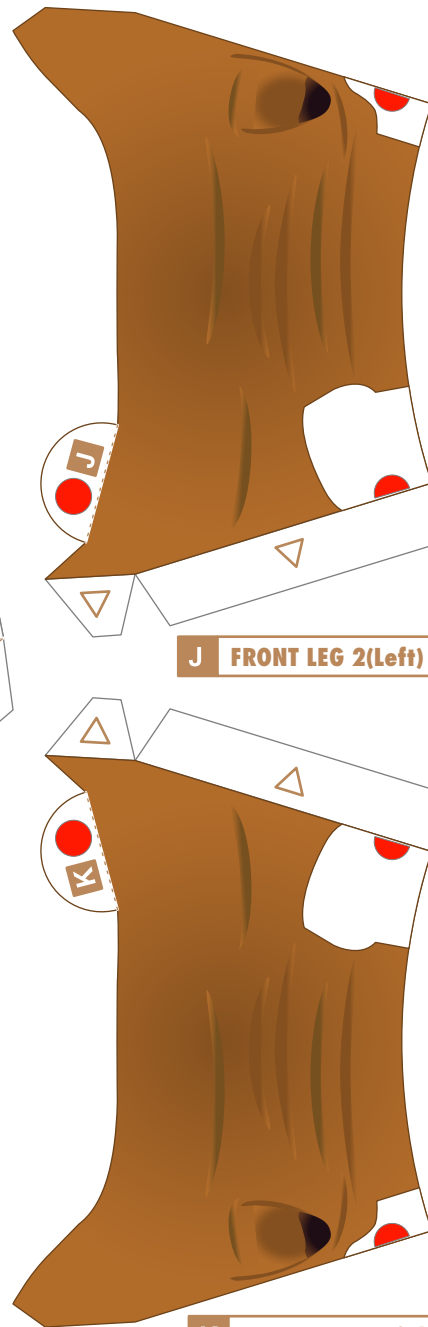






H FRONT LEG 1(Left)

I FRONT LEG 1(Right)



J FRONT LEG 2(Left)

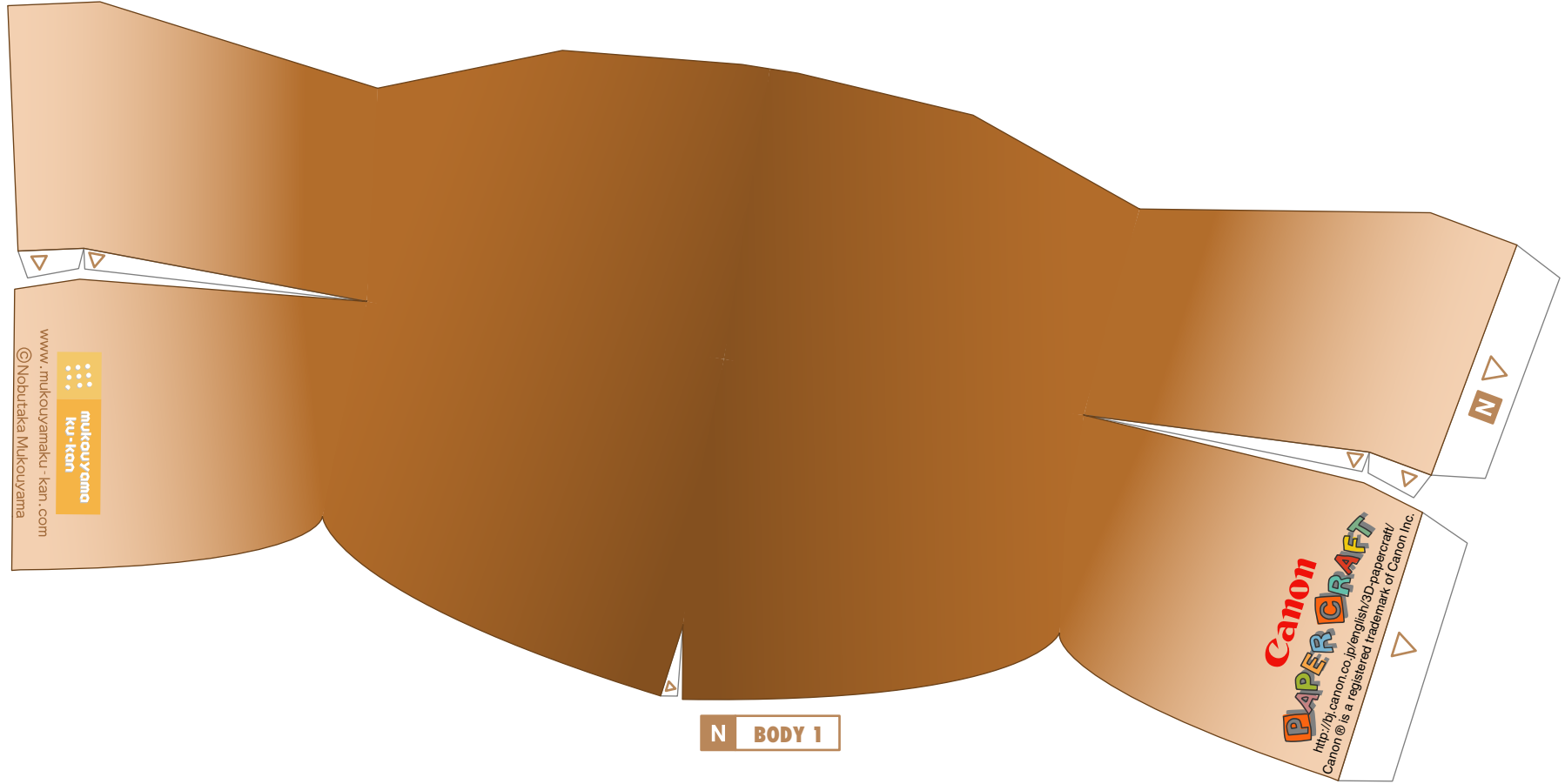
K FRONT LEG 2(Right)

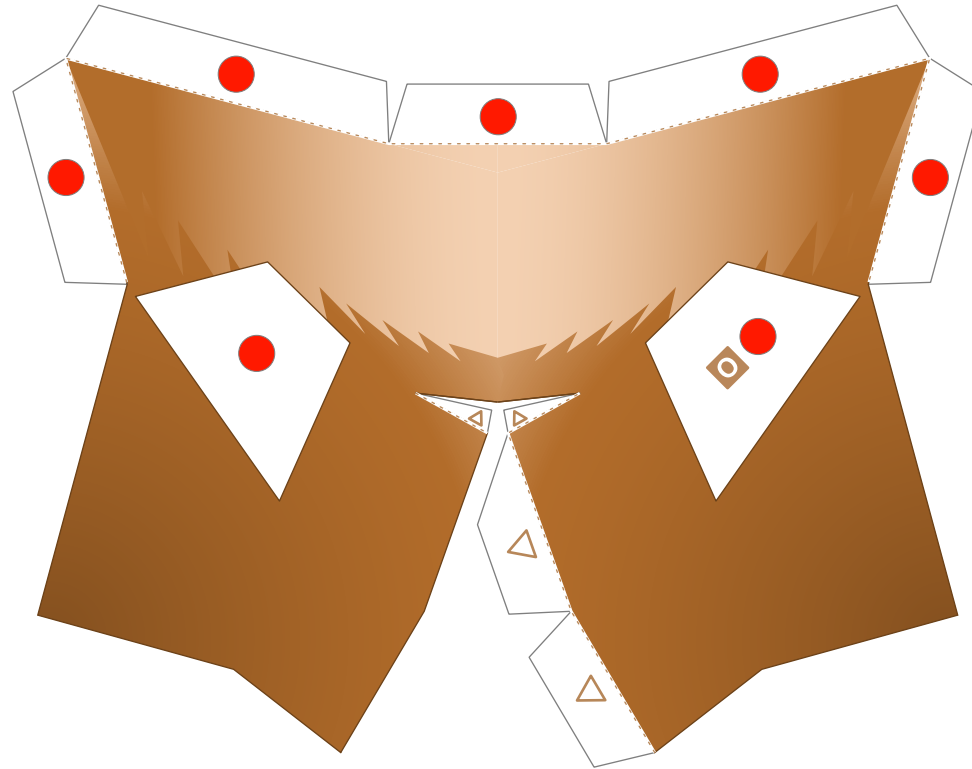


L FRONT LEG 3(Left)

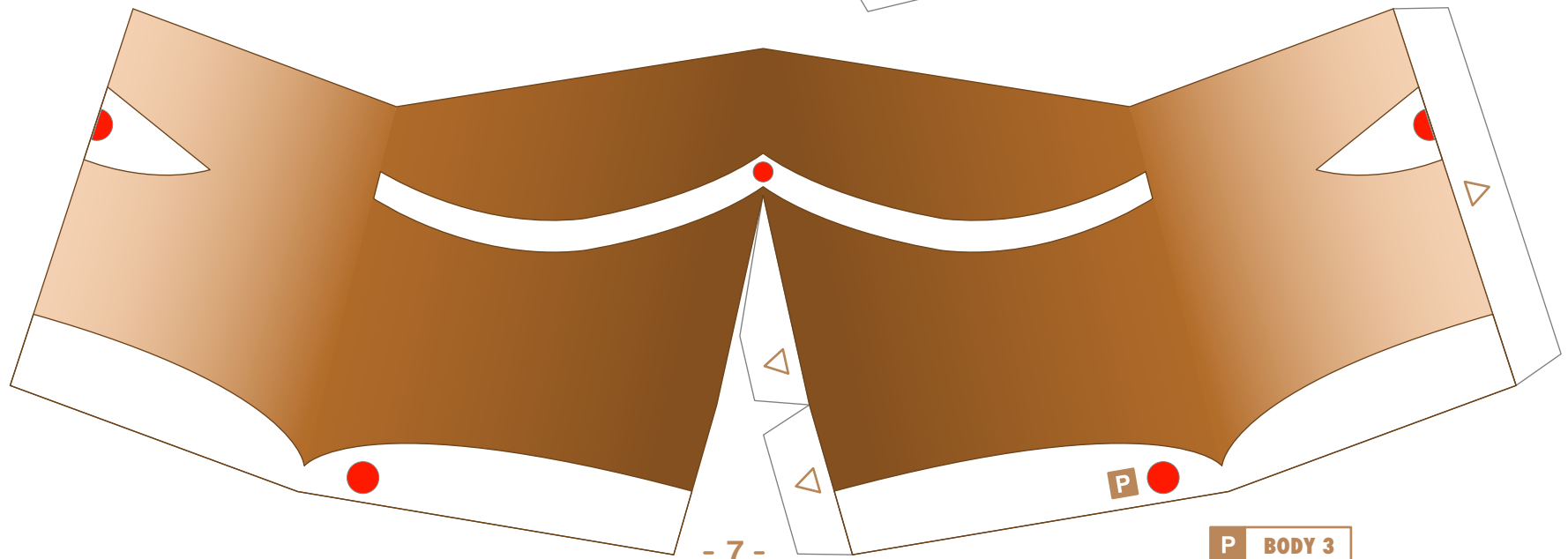


M FRONT LEG 3(Right)

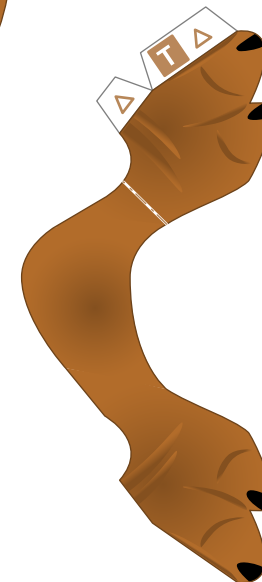
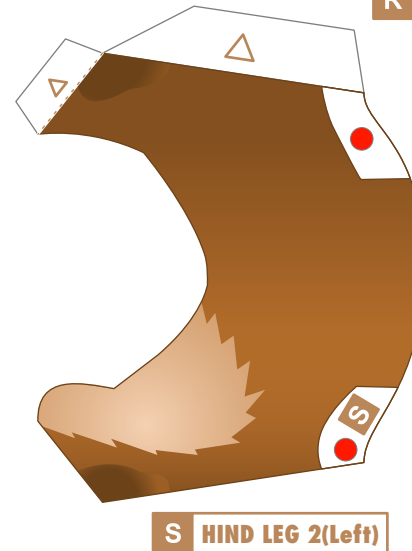
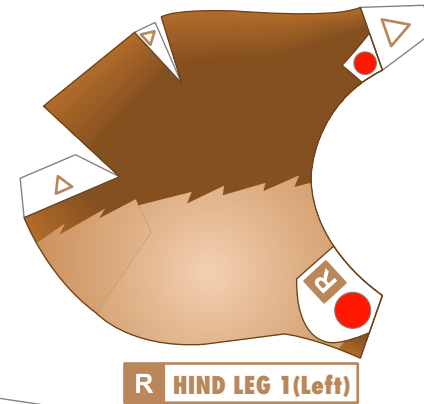
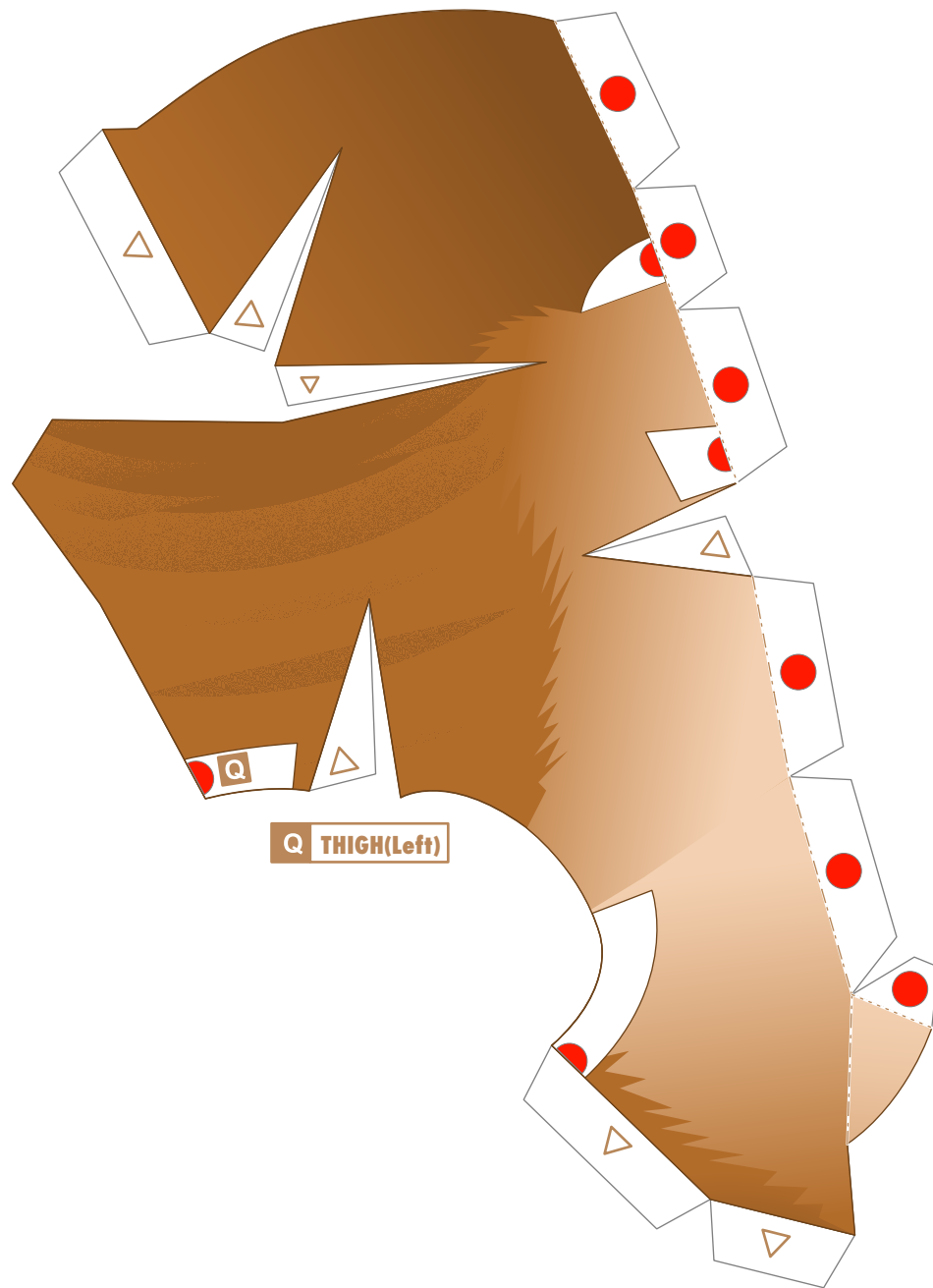




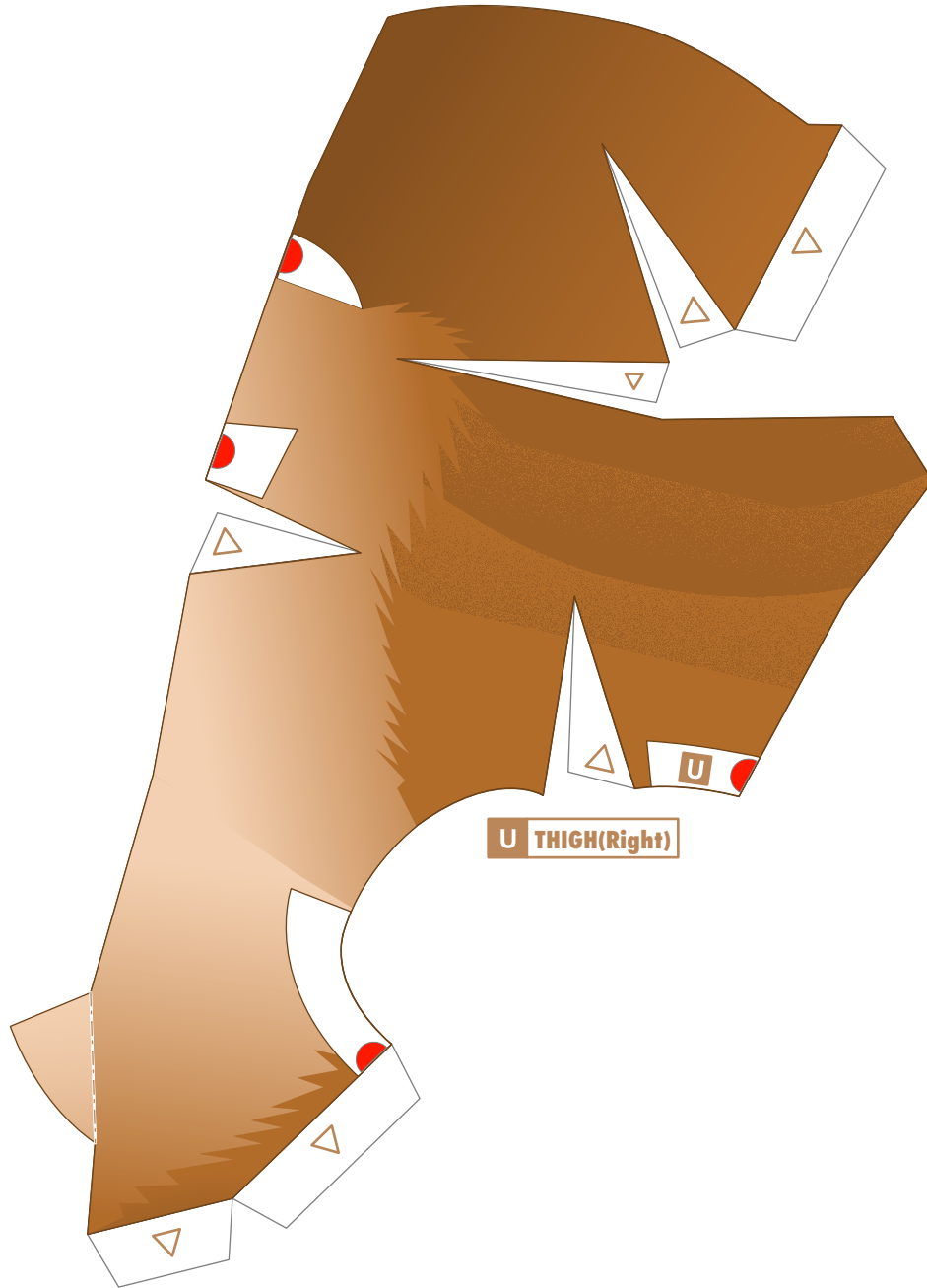
O BODY 2



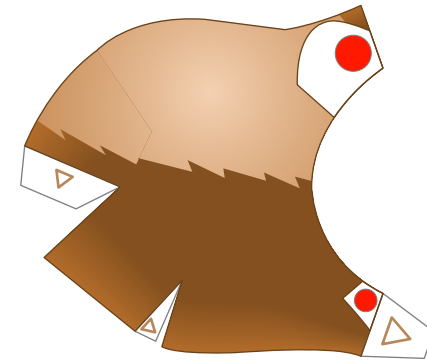
P BODY 3



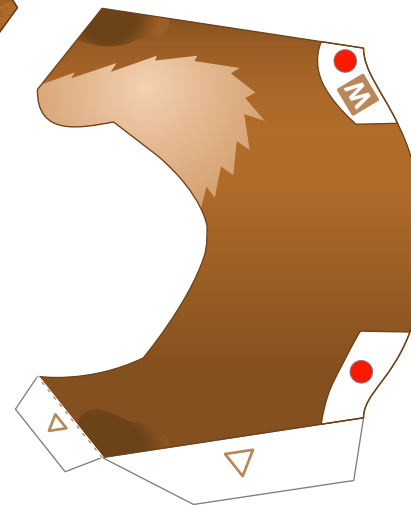




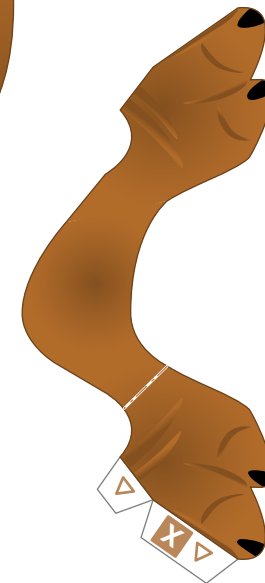
U THIGH(Right)



V HIND LEG 1(Right)



W HIND LEG 2(Right)



X HIND LEG 3(Right)



## Dachshund

**Chest circumference:** over 35 cm / 13.8 in  
**Weight:** 9 to 12 Kg / 18 to 24 lb **Origin:** Germany  
**Personality:** Friendly, loyal to their masters, patient and calm

In medieval Europe, in the areas surrounding present-day Germany, there are records of a breed of dog called the Teckel that was bred for hunting purposes. The Teckel, with its long torso and short legs, is considered to be the ancestor of today's Dachshund. With "dachs" meaning badger and "hund" meaning dog, the name Dachshund comes from what the breeds were originally developed for, which was to chase badgers and foxes down into their burrows.

While today's Dachshunds are considered loveable domestic dogs everywhere, they used to be treated as hunting dogs in Germany, the country of origin. The classification of Dachshund breeds traces back to these hunting days.

They are grouped according to the circumference of their chest to match the burrow size they can fit into, with the largest being the Standard (over 35 cm), followed by the Miniature (under 35 cm), and the smallest being the Kanichen (under 30 cm).

They are also classified into three coat types: Smooth-haired, Long-haired, and Wire-haired.

Dachshunds have friendly, lively qualities. They are loyal to their masters, patient, calm and when there is a visitor they will let their masters know by barking. Cleverness and an intelligent-looking facial expression also add to the appeal of the Dachshund.

This Papercraft is a model of the standard-size smooth-haired Dachshund, the most orthodox type, and is approximately half the size of a real Dachshund.

## Assembly Instructions



----- **Mountain fold.**



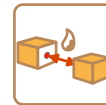
----- **Valley fold.**



———— **Cut line.**



△ **A triangle mark indicates a glue tab.**



● **A red dot indicates a glue tab to be used to glue to another part.**

### Tools and materials



Scissors, straightedge, glue (we recommend craft glue), a round stick such as a pencil (used for applying curvature to paper).

### Assembly tip



Crease all mountain folds and valley folds before gluing, and apply curvature to curved portions.

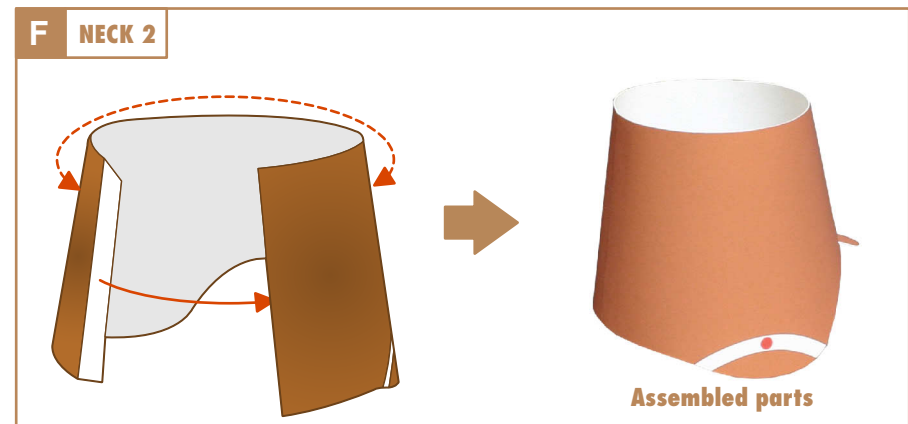
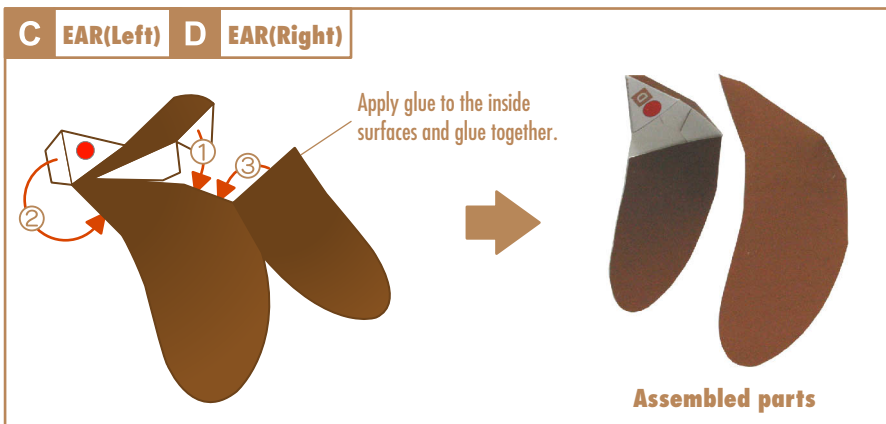
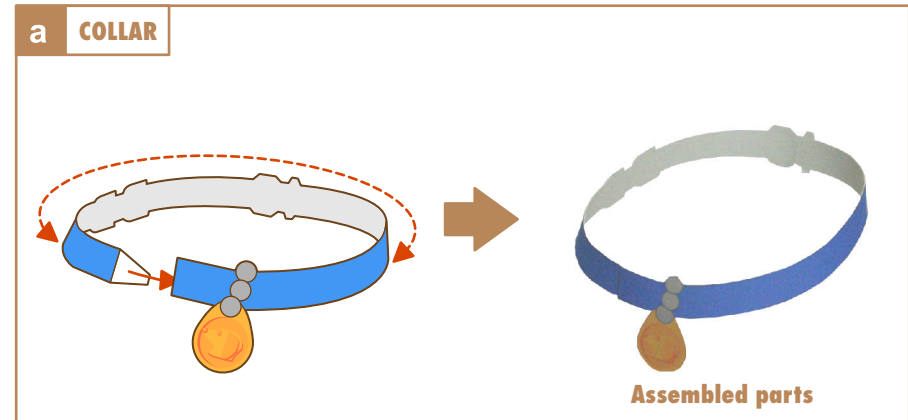
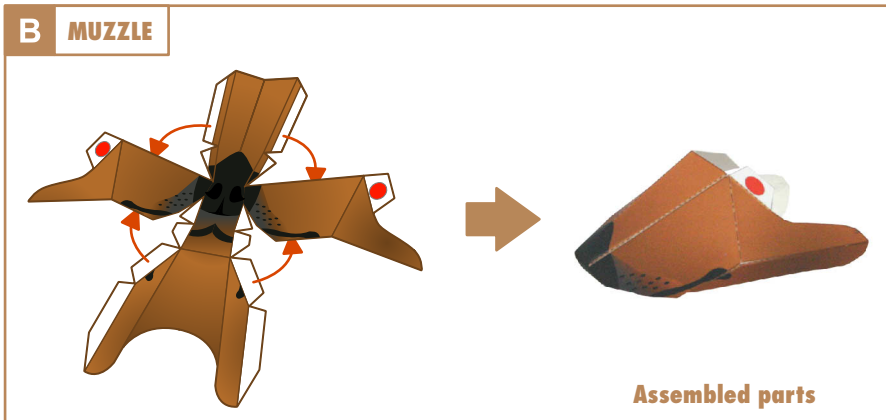
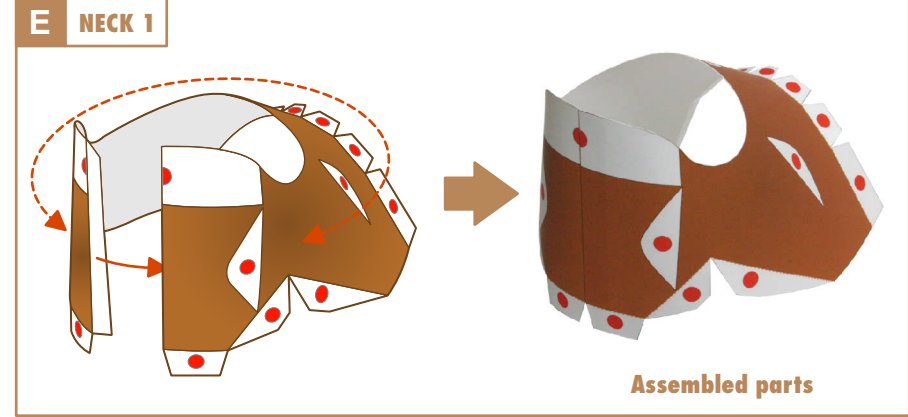
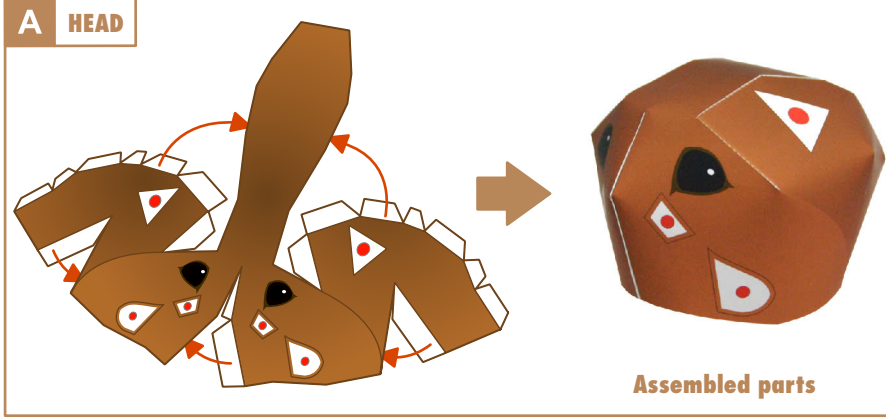
### Caution



Keep glue away from small children.

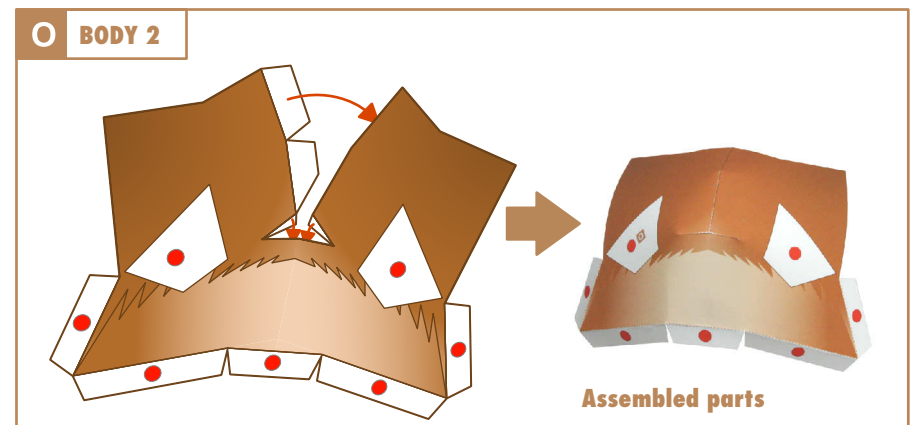
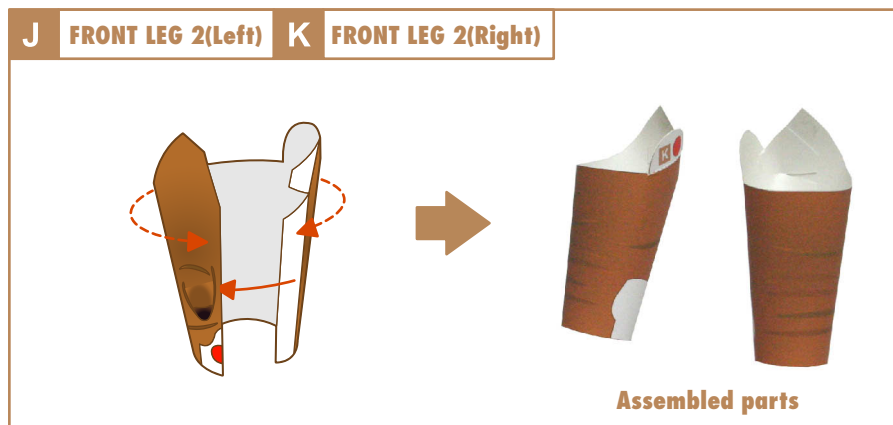
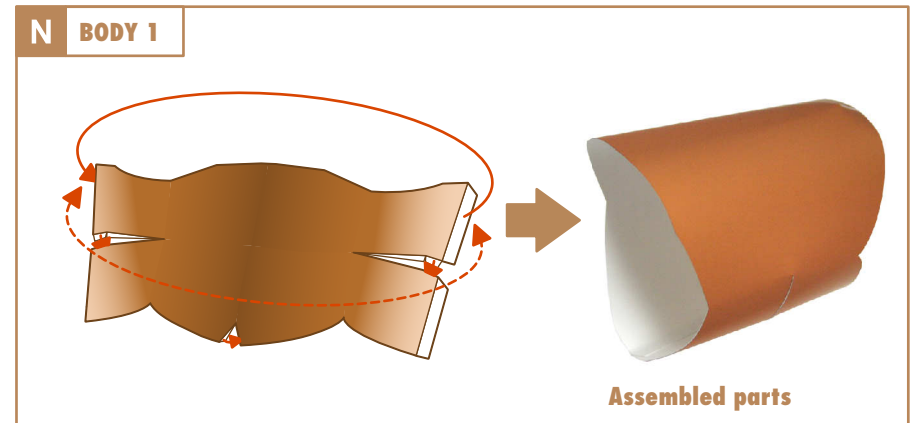
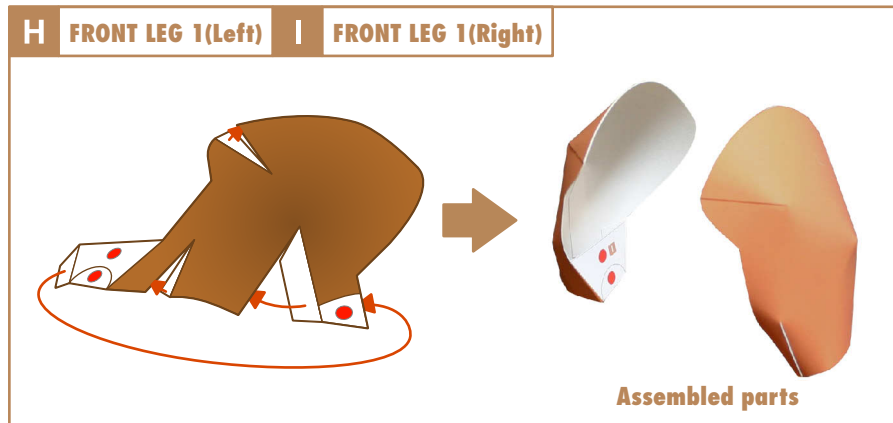
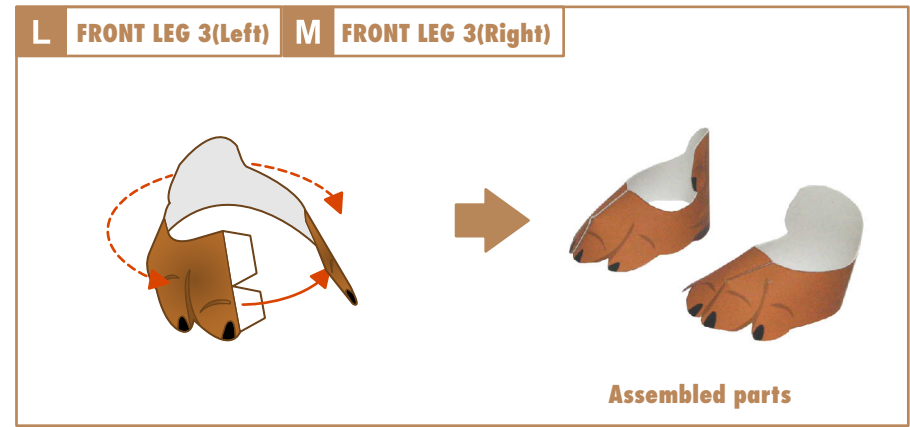
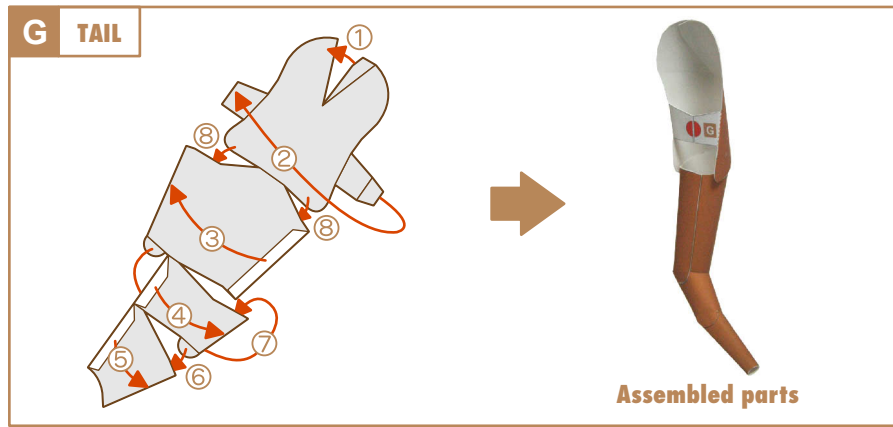
# Dachshund : Assembly directions

Attach  Curve 



# Dachshund : Assembly directions

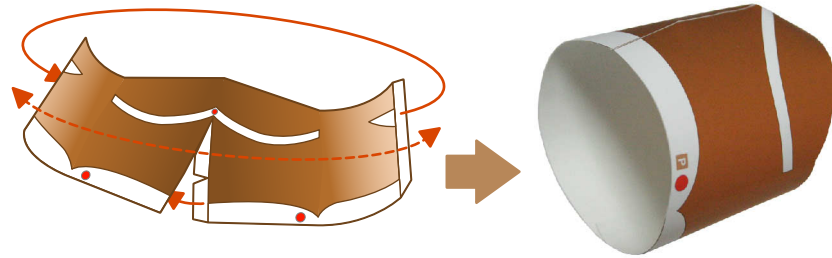
Attach  Curve 



# Dachshund : Assembly directions

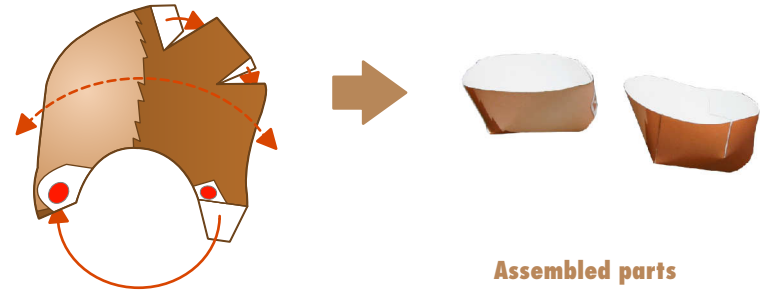
Attach → Curve - - - - ->

**P** BODY 3



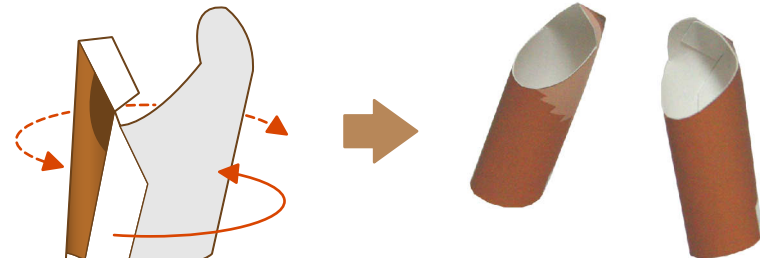
Assembled parts

**R** HIND LEG 1(Left) **V** HIND LEG 1(Right)



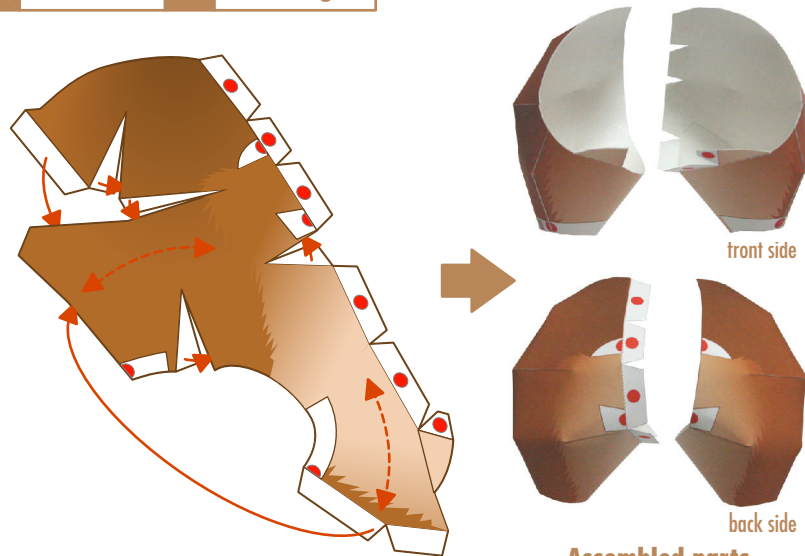
Assembled parts

**S** HIND LEG 2(Left) **W** HIND LEG 2(Right)



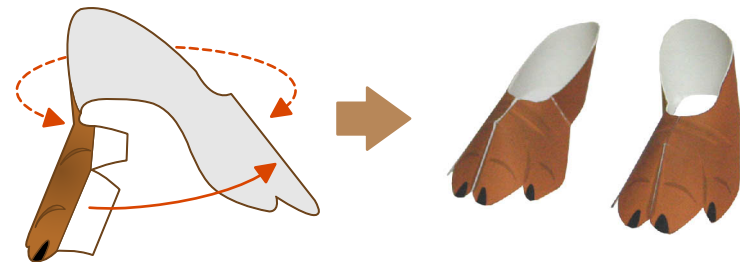
Assembled parts

**Q** THIGH(Left) **U** THIGH(Right)



Assembled parts

**T** HIND LEG 3(Left) **X** HIND LEG 3(Right)



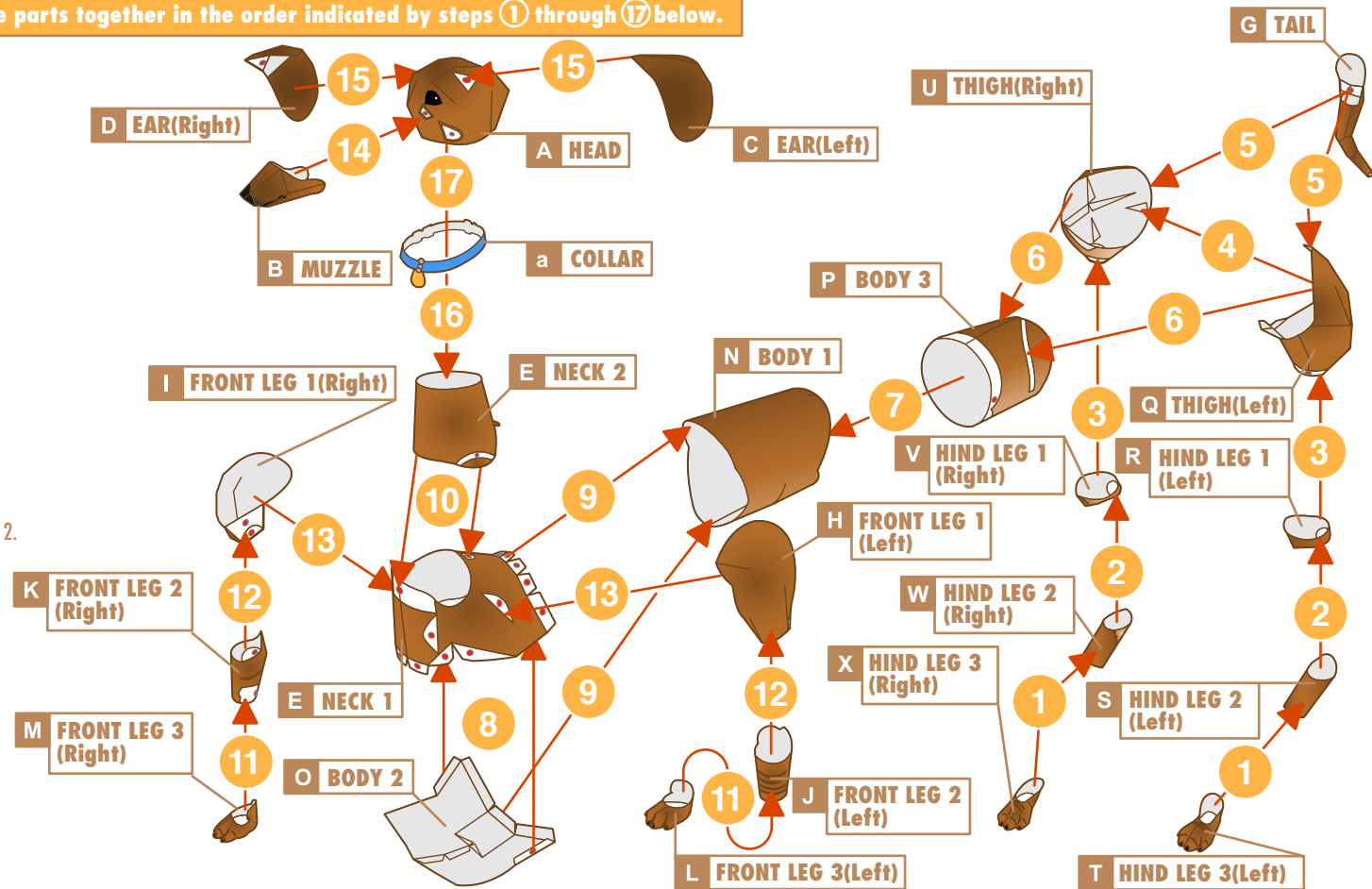
Assembled parts

# Dachshund : Assembly directions

Attach → Curve - - - ->

★ **Final assembly** Put the parts together in the order indicated by steps ① through ⑰ below.

- ① Glue HIND LEGS 3 to HIND LEGS 2.
- ② Glue HIND LEGS 2 to HIND LEGS 1.
- ③ Glue HIND LEGS 1 to THIGH.
- ④ Glue THIGH (Right) to THIGH (Left).
- ⑤ Glue TAIL to THIGH.
- ⑥ Glue THIGH to BODY 3.
- ⑦ Glue BODY 3 to BODY 1.
- ⑧ Glue BODY 2 to NECK 1.
- ⑨ Glue BODY 2 and NECK 1 to BODY 1.
- ⑩ Glue NECK 2 to NECK 1.
- ⑪ Glue FRONT LEGS 3 to FRONT LEGS 2.
- ⑫ Glue FRONT LEGS 2 to FRONT LEGS 1.
- ⑬ Glue FRONT LEGS to NECK 1 and BODY 2.
- ⑭ Glue MUZZLE to HEAD.
- ⑮ Glue EARS to HEAD.
- ⑯ Insert COLLAR into NECK 2.
- ⑰ Insert HEAD into NECK 2.



★ **Complete photo**

